

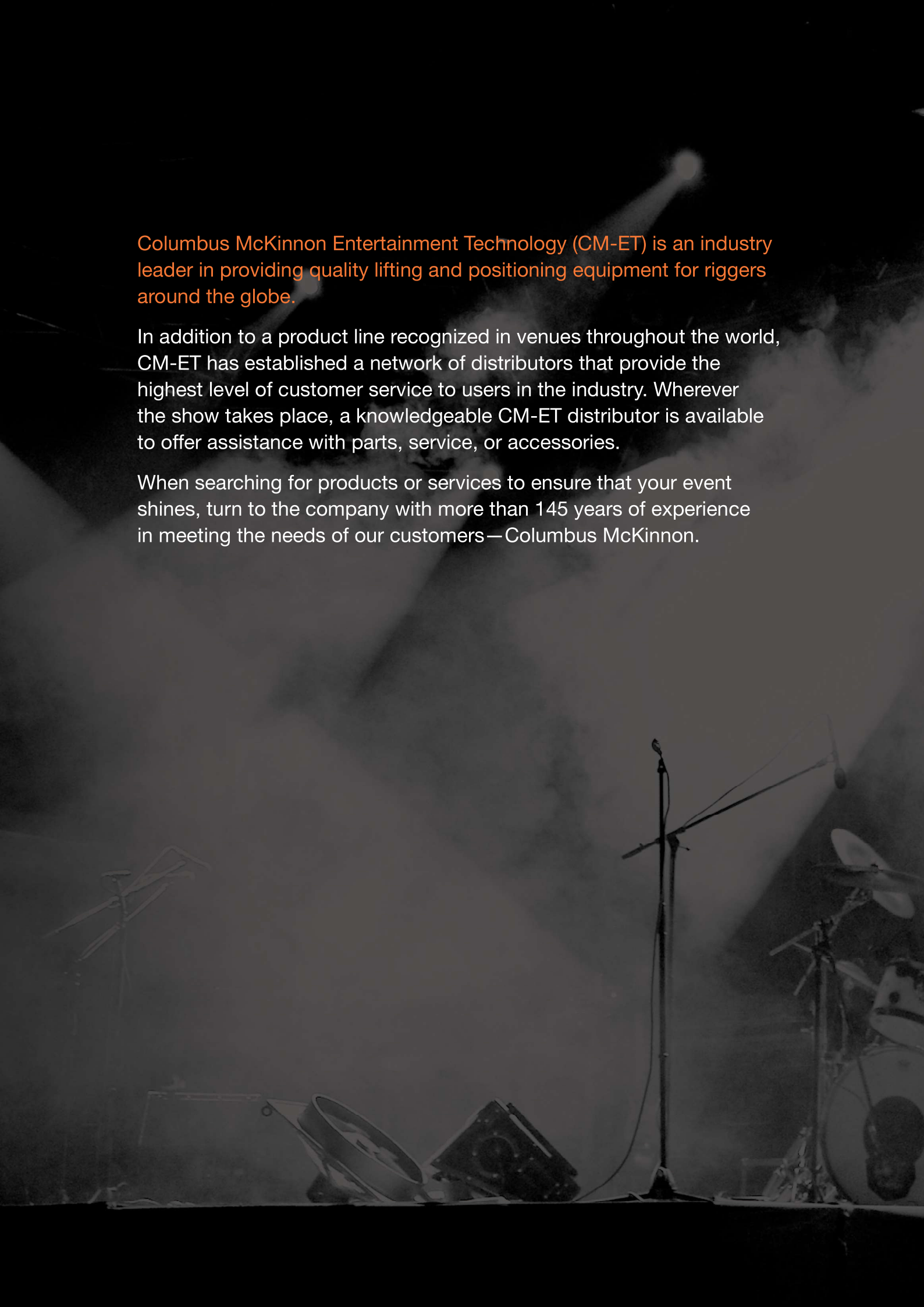


ENTERTAINMENT TECHNOLOGY

ENTERTAINMENT PRODUCT CATALOGUE



C O L U M B U S M C K I N N O N C O R P O R A T I O N



Columbus McKinnon Entertainment Technology (CM-ET) is an industry leader in providing quality lifting and positioning equipment for riggers around the globe.

In addition to a product line recognized in venues throughout the world, CM-ET has established a network of distributors that provide the highest level of customer service to users in the industry. Wherever the show takes place, a knowledgeable CM-ET distributor is available to offer assistance with parts, service, or accessories.

When searching for products or services to ensure that your event shines, turn to the company with more than 145 years of experience in meeting the needs of our customers—Columbus McKinnon.



TABLE OF CONTENTS

| | |
|----------------------------------|----|
| Lodestar (D8+) | 4 |
| Lodestar (D8) | 6 |
| Lodestar (2-tonne Single Reeved) | 8 |
| Prostar | 10 |
| STAC Chain | 11 |

LODESTAR[®] D8+ TÜV SÜD Certified

ELECTRIC CHAIN MOTOR

CAPACITIES

500 kg to 2000 kg

LIFT

18 metre standard***

SPEEDS

2 to 16 metre/minute

VOLTAGES

3-phase available

The Lodestar D8+ meets all current standard requirements. Its clutch, outside the load path, acts as a precise overload device; and design factor is 8:1 with a double brake installed.

The Lodestar D8+ is in accordance with 2018 igw SQ P2.

STANDARD FEATURES

IP 65 RATING

An Ingress Protection (IP) Rating of 65 indicates that the Lodestar offers protection from dust and high-pressure water – making this unit ideal for use in outdoor environments.

ADJUSTABLE CLUTCH

Clutch outside of gear train meets International standards and is fully adjustable. Designed to prevent damage to the hoist by preventing excessive overloads.

5 POCKET LIFTWHEEL

Improved chain life & smooth lifting.

PRECISION HELICAL GEARING

Designed for long life, and smoother operation.

REDESIGNED CONTROL PANEL

For easier access.

HEAVY DUTY DC BRAKE

Designed for a long service life, the brake location allows for quick access & easy inspection.

LOW VOLTAGE CONTROL

110 Volt for long cable runs without voltage drop. 24 & 48 Volt optional. (Low Voltage Unit Only)

DURABLE & LIGHTWEIGHT HOUSING

Cast aluminum. Black powder coated finish for low visibility.

LOAD CHAIN

Designed and manufactured by Columbus McKinnon to provide a factor of safety of 8:1. Zinc plated to protect against corrosion. Optional black finish available.

DUTY CYCLE

H4, FEM 2M rated for heavy duty applications

ELECTRICAL

Finger safe wiring meets all electrical codes. Quick change plugs allow for voltages 230 through 460. Prevents improper voltage connections which can cause hoist damage. (Low Voltage Unit Only).

ADJUSTABLE LIMIT SWITCH

Adjustable limit switch that will automatically stop the hook at any predetermined point when either lifting or lowering, preventing overtravel. (Low Voltage Unit Only).

METRIC RATED MEETS REQUIREMENTS

Meets or exceeds world standards.

ROAD READY

Easy to stow and travel.



LIFT WHEEL

5 Pocket liftwheel increases chain and liftwheel engagement while providing smoother lifting, less vibration and reduced chain wear when properly maintained.



BRAKE

Heavy duty double DC brake.



LIMIT SWITCH (Low Voltage unit only)

Adjustable limit switch that will automatically stop the hook at any predetermined point when either lifting or lowering.

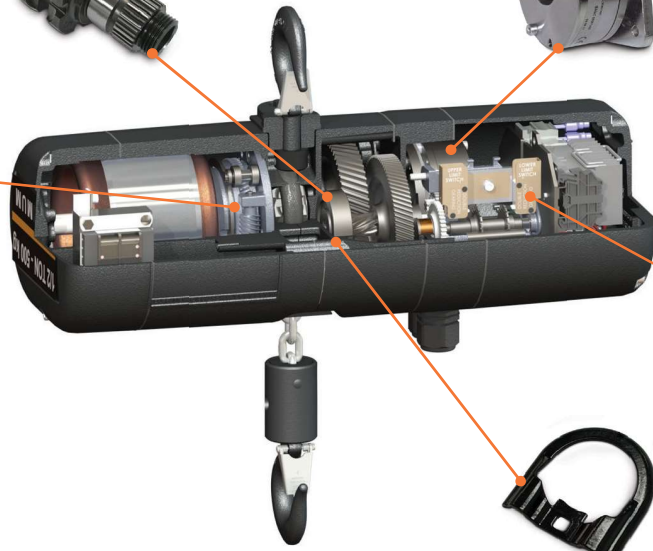


ADJUSTABLE CLUTCH

Designed to prevent lifting of excessive overloads. Located outside the gear box and easy to access.

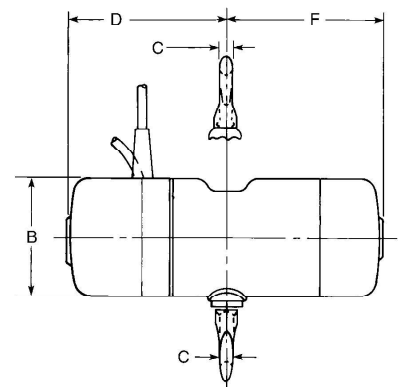
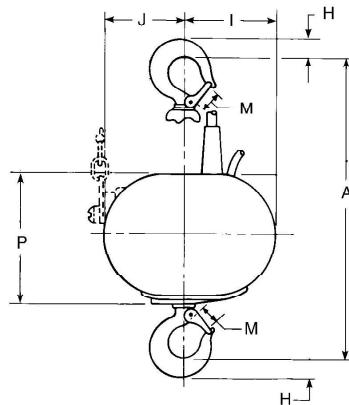
INTERNAL CHAIN GUIDE

Stamped steel guide coated for corrosion resistance and quiet operation, while keeping the load chain and liftwheel aligned.



DIMENSIONS

| Drawing Legend | Dimensions (mm) | | |
|----------------|-----------------|----------------------|------------------|
| | D8+ Series F | D8+ Series JJ, L, LL | D8+ Series R, RR |
| A | 413mm | 472mm | 613mm |
| B | 154mm | 194mm | 194mm |
| C | 17mm | 22mm | 29mm |
| D | 297mm | 253mm | 253mm |
| F | 225mm | 329mm | 329mm |
| H | 25mm | 30mm | 38mm |
| I | 107mm | 145mm | 179mm |
| J | 113mm | 176mm | 142mm |
| M | 25mm | 28mm | 33mm |
| P | 168mm | 208mm | 208mm |



SPECIFICATIONS

| Type | Rate Capacity | Standard Lifting Speed at 50Hz | Operating Voltage | Single Phase Voltage | FEM Class | Chain Weight Per Metre Lift-EWL | Load Chain EN 818-7 (mm) | Power Consumption - Full Load | Reeves Fall of Chain | Motor HP | Protection Class | Noise Level |
|----------|---------------|--------------------------------|-------------------|----------------------|-----------|---------------------------------|--------------------------|-------------------------------|----------------------|----------|------------------|-------------|
| Model F | 500kg | 4m/min | 400-3-50 | optional | 2M | 1.2kg | 6.3 x 18.9 | 1.2A | 1 | 1/2 HP | IP 65 | 68 db (A) |
| Model JJ | 500kg | 16m/min | 400-3-50 | - | 2M | 1.65kg | 7.9 x 21.7 | 3.6A | 1 | 2 HP | IP 65 | 68 db (A) |
| Model L | 1000kg | 4m/min | 400-3-50 | optional | 2M | 1.65kg | 7.9 x 21.7 | 2.3A | 1 | 1 HP | IP 65 | 68 db (A) |
| Model LL | 1000kg | 8m/min | 400-3-50 | - | 2M | 1.65kg | 7.9 x 21.7 | 3.6A | 1 | 2 HP | IP 65 | 68 db (A) |
| Model R | 2000kg | 2m/min | 400-3-50 | optional | 2M | 3.3kg | 7.9 x 21.7 | 2.3A | 2 | 1 HP | IP 65 | 68 db (A) |
| Model RR | 2000kg | 4m/min | 400-3-50 | - | 2M | 3.3kg | 7.9 x 21.7 | 3.6A | 2 | 2 HP | IP 65 | 68 db (A) |

*** Lifts other than 18 metres available (Standard Units shipped less chain unless specified). Consult factory for additional speeds and capacities

OPTIONAL FEATURES

DOUBLE LIMIT SWITCH

Adjustable screw limit switch that will automatically stop the hook at any predetermined point when either lifting or lowering.

CHAIN BAGS

Cloth type bags are durable and easy to mount.

DIRECT CONTROL UNITS

The CM Lodestar is available as a Direct Control Unit featuring a single cable. Direct Control Units can be used as part of a system with multiple units with a single control. The Lodestar is compatible with most Direct Control Motor Controllers.

2-TONNE, SINGLE REEVED MODELS (see page 8)

LODESTAR®

ELECTRIC CHAIN MOTOR

CAPACITIES

250 kg to 2000 kg

LIFT

18 metre standard***

SPEEDS

4 to 16 metre/minute

VOLTAGES

1-phase & 3-phase available

From World touring rock concerts and Broadway musicals to Las Vegas shows and sporting events, the CM Lodestar is the trusted industry workhorse.

The New Generation Lodestar complies with BGV-D8.

STANDARD FEATURES

IP 65 RATING

An Ingress Protection (IP) Rating of 65 indicates that the Lodestar offers protection from dust and high-pressure water – making this unit ideal for use in outdoor environments.

ADJUSTABLE CLUTCH

Clutch outside of gear train meets International standards and is fully adjustable. Designed to prevent damage to the hoist by preventing excessive overloads.

5 POCKET LIFTWHEEL

Improved chain life & smooth lifting.

PRECISION HELICAL GEARING

Designed for long life, and smoother operation.

REDESIGNED CONTROL PANEL

For easier access.

HEAVY DUTY DC BRAKE

Designed for a long service life, the brake location allows for quick access & easy inspection.

LOW VOLTAGE CONTROL

110 Volt for long cable runs without voltage drop. 24 & 48 Volt optional. (Low Voltage Unit Only)

DURABLE & LIGHTWEIGHT HOUSING

Cast aluminum. Black powder coated finish for low visibility.

LOAD CHAIN

Designed and manufactured by Columbus McKinnon to provide a factor of safety of 8:1. Zinc plated to protect against corrosion. Optional black finish available.

DUTY CYCLE

H4, FEM 2M rated for heavy duty applications.

ELECTRICAL

Finger safe wiring meets all electrical codes. Quick change plugs allow for voltages 230 through 460. Prevents improper voltage connections which can cause hoist damage. (Low Voltage Unit Only).

ADJUSTABLE LIMIT SWITCH

Adjustable limit switch that will automatically stop the hook at any predetermined point when either lifting or lowering, preventing overtravel. (Low Voltage Unit Only).

METRIC RATED MEETS REQUIREMENTS

Meets or exceeds world standards.

ROAD READY

Easy to stow and travel.



LIFT WHEEL
5 Pocket liftwheel increases chain and liftwheel engagement while providing smoother lifting, less vibration and reduced chain wear when properly maintained.

BRAKE
Heavy duty DC brake is standard. AC brake and double DC brake are also available.

ADJUSTABLE CLUTCH
Designed to prevent lifting of excessive overloads. Located outside the gear box and easy to access.

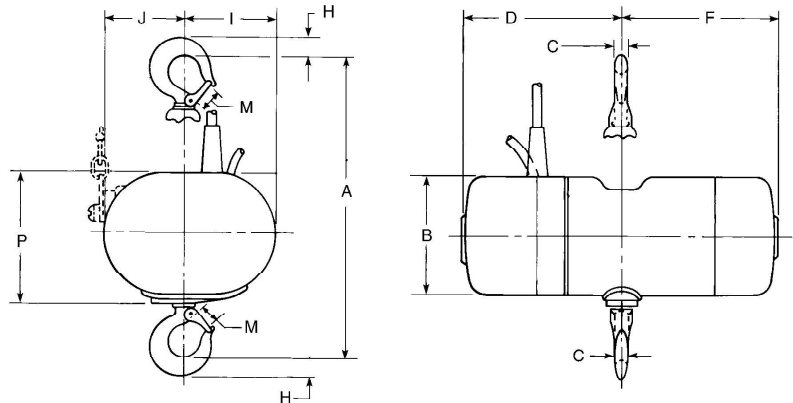
LIMIT SWITCH (Low Voltage unit only)
Adjustable limit switch that will automatically stop the hook at any predetermined point when either lifting or lowering.

CONTROL PANEL
Provides easy access to controls, plug and play connectors allow for quick voltage change for dual voltage motors. Fuses located on terminal strip (optional).

INTERNAL CHAIN GUIDE
Stamped steel guide coated for corrosion resistance and quiet operation, while keeping the load chain and liftwheel aligned.

DIMENSIONS

| Drawing Legend | Dimensions (mm) | | |
|----------------|-------------------|--------------------|-----------------|
| | D8 Series B, C, F | D8 Series J, L, LL | D8 Series R, RR |
| A | 413mm | 472mm | 613mm |
| B | 1154mm | 194mm | 194mm |
| C | 17mm | 22mm | 29mm |
| D | 297mm | 253mm | 253mm |
| F | 225mm | 329mm | 329mm |
| H | 25mm | 30mm | 38mm |
| I | 107mm | 145mm | 179mm |
| J | 113mm | 176mm | 142mm |
| M | 25mm | 28mm | 33mm |
| P | 168mm | 208mm | 208mm |



SPECIFICATIONS

| Type | Rate Capacity | Standard Lifting Speed at 50Hz | Operating Voltage | Single Phase Voltage | FEM Class | Chain Weight Per Metre Lift-EWL | Load Chain EN 818-7 (mm) | Power Consumption - Full Load | Reeves Fall of Chain | Motor HP | Protection Class | Noise Level |
|----------|---------------|--------------------------------|-------------------|----------------------|-----------|---------------------------------|--------------------------|-------------------------------|----------------------|----------|------------------|-------------|
| Model B | 250kg | 4m/min | 400-3-50 | optional | 2M | 1.2kg | 6.3 x 18.9 | 1.1A | 1 | 1/4 HP | IP 65 | 68 db (A) |
| Model C | 250kg | 8m/min | 400-3-50 | optional | 2M | 1.2kg | 6.3 x 18.9 | 1.2A | 1 | 1/2 HP | IP 65 | 68 db (A) |
| Model F | 500kg | 4m/min | 400-3-50 | optional | 2M | 1.2kg | 6.3 x 18.9 | 1.2A | 1 | 1/2 HP | IP 65 | 68 db (A) |
| Model J | 500kg | 8m/min | 400-3-50 | - | 2M | 1.65kg | 7.9 x 21.7 | 2.3A | 1 | 1 HP | IP 65 | 68 db (A) |
| Model JJ | 500kg | 16m/min | 400-3-50 | - | 2M | 1.65kg | 7.9 x 21.7 | 3.6A | 1 | 2 HP | IP 65 | 68 db (A) |
| Model L | 1000kg | 4m/min | 400-3-50 | optional | 2M | 1.65kg | 7.9 x 21.7 | 2.3A | 1 | 1 HP | IP 65 | 68 db (A) |
| Model LL | 1000kg | 8m/min | 400-3-50 | - | 2M | 1.65kg | 7.9 x 21.7 | 3.6A | 1 | 2 HP | IP 65 | 68 db (A) |
| Model R | 2000kg | 2m/min | 400-3-50 | optional | 2M | 3.3kg | 7.9 x 21.7 | 2.3A | 2 | 1 HP | IP 65 | 68 db (A) |
| Model RR | 2000kg | 4m/min | 400-3-50 | - | 2M | 3.3kg | 7.9 x 21.7 | 3.6A | 2 | 2 HP | IP 65 | 68 db (A) |

*** Lifts other than 18 metres available (Standard Units shipped less chain unless specified). Consult factory for additional speeds and capacities

OPTIONAL FEATURES

DOUBLE DC BRAKE
Two independent acting DC brakes for redundant braking. Field installation kit available.

DOUBLE LIMIT SWITCH
Adjustable screw limit switch that will automatically stop the hook at any predetermined point when either lifting or lowering.

VARIABLE SPEED UNITS AVAILABLE (VFD)
Varistar or variable speed versions available, please contact your CM-ET sales representative for details.

CHAIN BAGS
Cloth type bags are durable and easy to mount.

DIRECT CONTROL UNITS
The CM LodeStar is available as a Direct Control Unit featuring a single cable. Direct Control Units can be used as part of a system with multiple units with a single control. The LodeStar is compatible with most Direct Control Motor Controllers.

2-TONNE, SINGLE REEVED MODELS (see page 8)

LODESTAR®

ELECTRIC CHAIN MOTOR

2-TONNE SINGLE-REEVED

The CM® entertainment Lodestar® is now available as an economical 2-tonne, single-reeved unit that's ideal for a variety of lifting applications. And, because it's a single-reeved unit, overall weight is decreased and safety increased making it easier to transport and rig compared to a traditional double-reeved unit.

BENEFITS & FEATURES

IP 65 RATING

An Ingress Protection (IP) Rating of 65 indicates that the Lodestar offers protection from dust and high-pressure water – making this unit ideal for use in outdoor environments.

HIGH-PERFORMANCE COMPOSITE CORD GRIPS

Prevent water from entering the motor body at the pendant and power cord points of entry.

CONTINUOUS GASKETS

Create a waterproof seal between the gearbox assembly and the back frame and motor covers.

O-RINGS ON LIFT WHEEL BEARING

Prevent water from entering the motor body through the lift wheel opening.

EASY TO TRANSPORT & RIG

With less chain than double-reeved units, the 2-tonne, single-reeved Lodestar is lighter, making it easier to transport and rig.

ADJUSTABLE CLUTCH

Clutch outside of gear train meets International standards and is fully adjustable. Designed to prevent damage to the hoist by preventing excessive overloads.

IMPROVED CHAIN LIFE

5-pocket lift wheel provides better chain and lift wheel engagement for smoother lifting and reduced vibration, equating to less wear and a longer chain life.

LESS MAINTENANCE & EASIER INSPECTION

- Brake location allows for quick access and easy inspection.
- Lifetime grease-lubricated gear box means no oil change is required.
- Clutch located outside the gear box allows for easy access, which eliminates the need for complete disassembly and reduces downtime.

IMPROVED SERVICEABILITY

Easy access to the clutch, motor, electrical control panel and brake assembly.

METRIC RATED

EASY-ACCESS CONTROL PANEL

Finger-safe wiring and plug-and-play connectors on the control panel allow for quick voltage change, easy access to terminal strips and simple fuse installation.

LONGER SERVICE LIFE

- Heavy-duty DC brake is designed for a long service life.
- Lifetime grease-lubricated gear box and helical gearing ensures longer life and smooth operation. Heavy-duty-rated motors.

IMPROVED LOAD SAFETY

Clutch is located outside the load path, preventing slipping of the load in an overload condition when the brake is not powered.

ADJUSTABLE LIMIT SWITCH

Easy to adjust limit switch automatically stops the hook at any predetermined point when either lifting or lowering, preventing overtravel.

OVERLOAD PROTECTOR

Helps prevent lifting of dangerous overloads.

LIFETIME WARRANTY

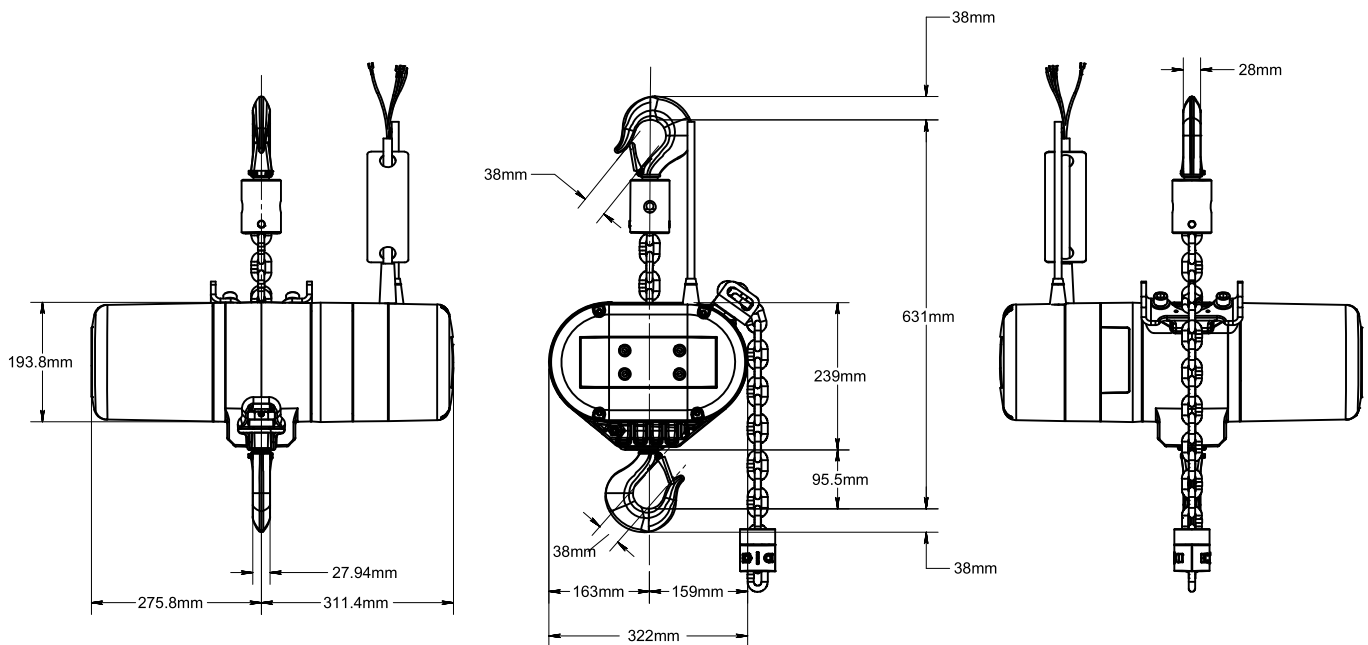
The industry's best warranty against manufacturing and material defects.

SWIVEL OR RIGID HOOK SUSPENSION AVAILABLE



NEW HIGH-PERFORMANCE COMPOSITE CORD GRIPS





Dimensions are RRS model CM-ET LodeStar 2 tonne Single Reeved with Swivel Latch Type Hook Suspension.

OPTIONAL FEATURES

DOUBLE DC BRAKE

Two independent acting DC brakes for redundant braking. Field installation kit available.

DOUBLE LIMIT SWITCH

Adjustable limit switch that will automatically stop the hook at any predetermined point when either lifting or lowering.

ENCODERS

Available for positioning, incremental and absolute.

VARIABLE SPEED UNITS AVAILABLE (VFD)

Varistar or variable speed versions available, please contact your CM-ET sales representative for details.

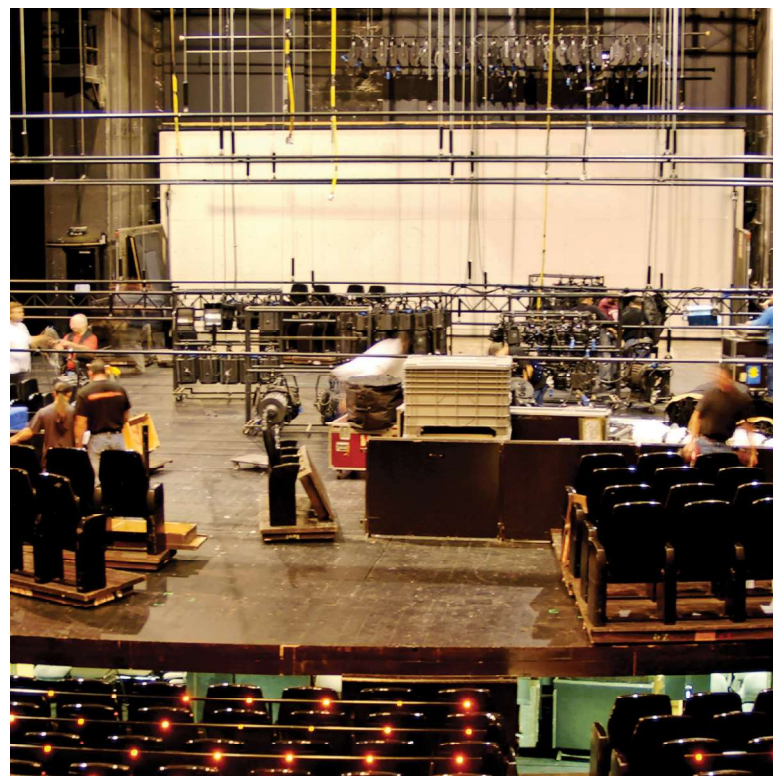
CM ALLOY LATCHLOK® HOOKS

Latchlok® hooks combine innovative design and solid alloy steel. I-beam construction offers more reliable performance than any other hook on the market.

- One-hand operation and recessed push-button thumb release for smooth and dependable opening.
- Hook remains locked until released by the operator, even if chain goes slack.
- Sturdy forged heat treated I-beam construction for strong, yet lightweight hooks.
- Lifetime warranty.
- Made in U.S.A.

DIRECT CONTROL UNITS

The CM LodeStar is available as a Direct Control Unit featuring a single cable. Direct Control Units can be used as part of a system with multiple units with a single control. The LodeStar is compatible with most Direct Control Motor Controllers.



PROSTAR®

ELECTRIC CHAIN MOTOR

CAPACITIES

136 kg to 500 kg

LIFT

18 metre standard***

SPEEDS

2.4 to 12 metre/minute

VOLTAGES

3-phase available

Lightweight, quiet and portable, the CM Prostar is designed and built for the unique rigging needs encountered at small venues. Featuring an overload device that protects the hoist, operator and structure from damaging overloads.

BENEFITS & FEATURES

DC ELECTRO-MECHANICAL BRAKES

Non-adjusting for low maintenance and quiet operation.

GEARING

Precision machined gears heat treated for strength and durability.

CHAIN GUIDE

One piece jam free for smooth operation.

HOUSING

Lightweight, cast aluminum, durable and strong black powder coated finish for low visibility.

LIFT WHEEL

CM patented 10 pocket oblique lift wheel for quiet and smooth operation.

LOW VOLTAGE CONTROL

110 Volt for long cable runs without voltage drop. 24 and 48 Volt optional.

DUTY CYCLE

H-4 duty rated, designed for heavy duty application. FEM 2m.

OVERLOAD PROTECTION

Helps prevent lifting of dangerous overloads.

CHAIN STOP

Mounted on Load Chain prevents over-travel.

METRIC RATED

LOAD CHAIN
Designed and manufactured by Columbus McKinnon. Zinc plated to protect against corrosion. Black phosphate finish optional.

THE INDUSTRY'S BEST LIFETIME WARRANTY

OPTIONAL FEATURES

CHAIN BAG

Easy-to-Mount Cloth Type Bags.

DOUBLE BRAKE

ENCODER

UPPER SWIVEL HOOK SUSPENSION

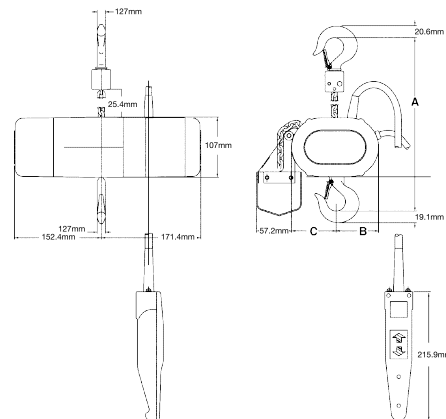


SPECIFICATIONS

| Rate Capacity | Reeves of Full Chain | Motor HP | Lifting Speed | Hoist Weight (Un-chained) | Chain Weight Per Metre | Full Load Amps | |
|---------------|----------------------|----------|---------------|---------------------------|------------------------|----------------|------------|
| | | | | | | 1-Phase | 3-Phase |
| 136kg | 1 | 1/6 | 4.8m/min | 12.7 | 0.35kg | 3.6 | .6* / 1.2" |
| 136kg | 1 | 1/6 | 4.8m/min | 12.7 | 0.35kg | - | .6* / 1.1" |
| 226kg | 1 | 1/6 | 4.8m/min | 12.7 | 0.35kg | - | .7* / 1.2" |
| 226kg | 1 | 1/6 | 3.7m/min | 12.7 | 0.35kg | 4 | - |
| 272kg | 2 | 1/6 | 2.4m/min | 16.3 | 0.7kg | 3.6 | .6* / 1.1" |
| 272kg | 2 | 1/6 | 2.4m/min | 16.3 | 0.7kg | 3.6 | .6* / 1.1" |
| 500kg | 2 | 1/6 | 2.4m/min | 16.3 | 0.7kg | - | .7* / 1.2" |

*415 volt operation. *220 volt operation.

| Rate Capacity | Lift Speed | Operating Voltage | | | |
|---------------|------------|-------------------|-------------|-------------|-------------|
| | | Single Phase | | Three Phase | |
| 136kg | 4.8m/min | 115-1-50/60 | 220-1-50/60 | 220-3-50/60 | 415-3-50/60 |
| 136kg | 7.3m/min | - | - | 220-3-50/60 | 415-3-50/60 |
| 136kg | 12m/min | - | - | 220-3-50/60 | 415-3-50/60 |
| 226kg | 3.7m/min | 115-1-50/60 | 220-1-50/60 | - | - |
| 226kg | 4.8m/min | - | - | 220-3-50/60 | 415-3-50/60 |
| 226kg | 6m/min | - | - | 220-3-50/60 | 415-3-50/60 |
| 272kg | 2.4m/min | 115-1-50/60 | 220-1-50/60 | - | - |
| 272kg | 3.7m/min | - | - | 220-3-50/60 | 415-3-50/60 |
| 500kg | 1.8m/min | 115-1-50/60 | 220-1-50/60 | - | - |
| 500kg | 2.4m/min | - | - | 220-3-50/60 | 415-3-50/60 |
| 500kg | 3.7m/min | - | - | 220-3-50/60 | 415-3-50/60 |



DIMENSIONS

| Drawing Legend | Reeving | |
|----------------|---------|--------|
| | Single | Double |
| A | 279mm | 308mm |
| B | 75mm | 89mm |
| C | 73mm | 60mm |

*** Lifts other than 18 metres available (Standard Units shipped less chain unless specified).

THE CM SPECIAL THEATRICAL ALLOY CHAIN S.T.A.C.

WORKING LOAD LIMIT

6000 kg

For theatrical rigging applications where bridle adjustability is required

BENEFITS & FEATURES

SUPER STRENGTH

Grade 80 alloy material with 1/2" diameter and 6 tonne working load limit.

HEAT TREATED

Alloy steel provides long life.

FIRE & ABRASION RESISTANT

4:1 DESIGN FACTOR

Meets or exceeds worldwide standards.

PROOF TESTED

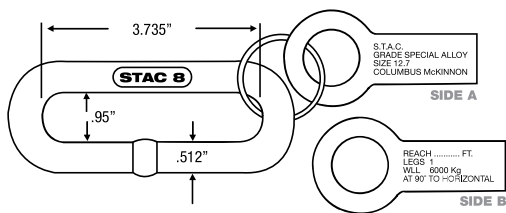
Each link is proof tested to assure weld and material integrity.

POSITIVE AND EASY ID

Chain embossed with "STAC" and "CM" for easy identification as CM alloy. Also tagged with size, grade, reach and working load limit.

VERSATILITY

Link accepts up to 3/4" shackle for adjustability.



S.T.A.C. CHAIN SETS SPECIAL THEATRICAL ALLOY CHAIN

BENEFITS & FEATURES

- Cut to desired length to meet your needs.
- Each assembly tagged with reach and length.
- Black finish.
- Fits and functions with the CM line of black shackles.
- Wide links allow for easy hook up.

| Chain Size (in.) | Length (ft.) | Cut Length Product Code | Weight (lbs.) |
|------------------|--------------|-------------------------|---------------|
| 1/2" | 3 | 695575 | 6.70 |
| | 4 | 695576 | 9.94 |
| | 5 | 695577 | 11.96 |
| | 6 | 695578 | 13.99 |
| | 7 | 695579 | 16.01 |
| | 8 | 695580 | 18.03 |
| | 9 | 695581 | 20.05 |
| | 10 | 695582 | 22.07 |
| | 11 | 695583 | 24.10 |
| | 12 | 695584 | 26.12 |
| | 13 | 695585 | 28.14 |
| | 14 | 695586 | 30.16 |
| | 15 | 695587 | 32.18 |



COLUMBUS MCKINNON CORPORATION
ENTERTAINMENT PRODUCTS

Knutsford Way, Sealand Industrial Estate, Chester, CH1 4NZ United Kingdom

Tel: +44 (0) 1244 375375 | Fax: +44 (0) 1244 377403 | www.cm-et.com