

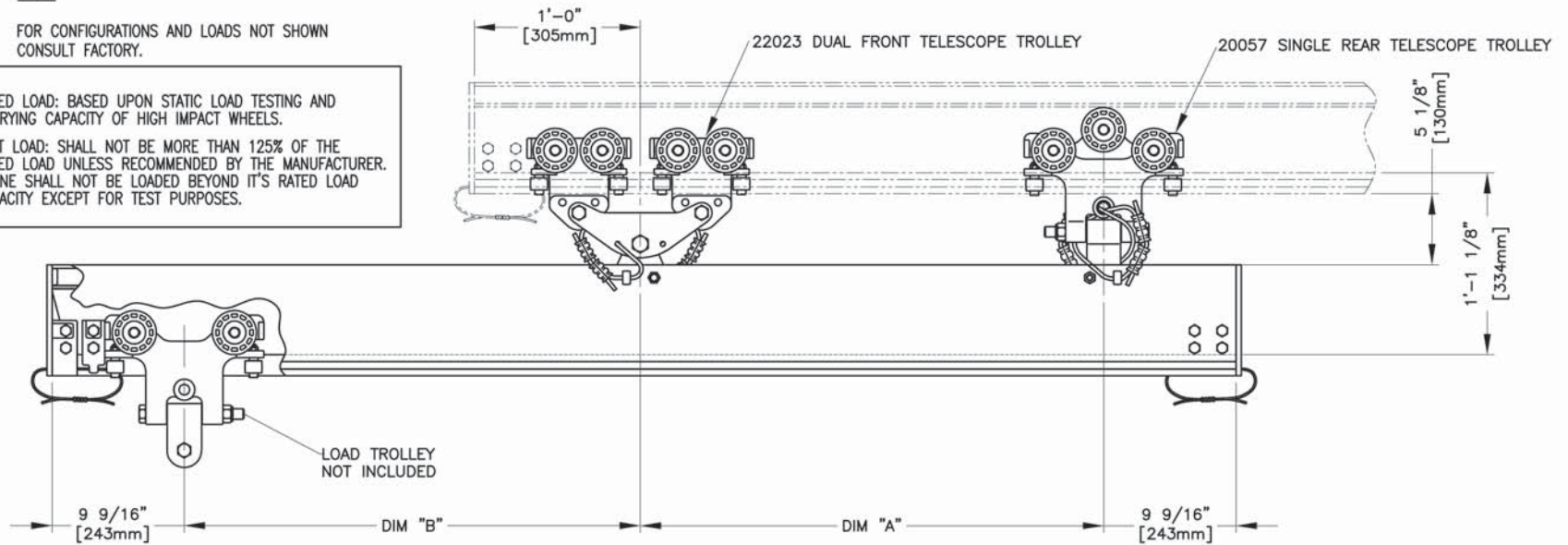
ETA-8 TELESCOPING UNITS

ETA-8 TELESCOPE UNIT WITH DUAL FRONT AND SINGLE REAR TROLLEYS															
"A"	"B"	RATED LOAD		"A"	"B"	RATED LOAD		"A"	"B"	RATED LOAD		"A"	"B"	RATED LOAD	
		1/250	1/450			1/250	1/450			1/250	1/450			1/250	1/450
24 INCH	24 in.	475 lbs.	475 lbs.	36 INCH	24 in.	760 lbs.	760 lbs.	48 INCH	24 in.	1000 lbs.	1000 lbs.	60 INCH	24 in.	1000 lbs.	1000 lbs.
	36 in.	320 lbs.	320 lbs.		36 in.	495 lbs.	495 lbs.		36 in.	675 lbs.	675 lbs.		36 in.	855 lbs.	855 lbs.
	48 in.	230 lbs.	230 lbs.		48 in.	365 lbs.	365 lbs.		48 in.	495 lbs.	495 lbs.		48 in.	630 lbs.	580 lbs.
	60 in.	175 lbs.	175 lbs.		60 in.	280 lbs.	280 lbs.		60 in.	390 lbs.	390 lbs.		60 in.	495 lbs.	410 lbs.
	72 in.	140 lbs.	140 lbs.		72 in.	225 lbs.	225 lbs.		72 in.	315 lbs.	315 lbs.		72 in.	405 lbs.	300 lbs.

NOTE:

FOR CONFIGURATIONS AND LOADS NOT SHOWN
CONSULT FACTORY.

RATED LOAD: BASED UPON STATIC LOAD TESTING AND CARRYING CAPACITY OF HIGH IMPACT WHEELS.
TEST LOAD: SHALL NOT BE MORE THAN 125% OF THE RATED LOAD UNLESS RECOMMENDED BY THE MANUFACTURER. CRANE SHALL NOT BE LOADED BEYOND IT'S RATED LOAD CAPACITY EXCEPT FOR TEST PURPOSES.



ETA-8 TELESCOPE UNIT WITH DUAL FRONT AND SINGLE REAR TROLLEYS															
"A"	"B"	RATED LOAD		"A"	"B"	RATED LOAD		"A"	"B"	RATED LOAD		"A"	"B"	RATED LOAD	
		1/250	1/450			1/250	1/450			1/250	1/450			1/250	1/450
610 mm	610mm	215 Kg.	215 Kg.	914 mm	610mm	345 Kg.	345 Kg.	1219 mm	610mm	454 Kg.	454 Kg.	1524 mm	610mm	454 Kg.	454 Kg.
	914mm	145 Kg.	145 Kg.		914mm	225 Kg.	225 Kg.		914mm	306 Kg.	306 Kg.		914mm	388 Kg.	388 Kg.
	1219mm	104 Kg.	104 Kg.		1219mm	166 Kg.	166 Kg.		1219mm	225 Kg.	225 Kg.		1219mm	285 Kg.	263 Kg.
	1524mm	79 Kg.	79 Kg.		1524mm	127 Kg.	127 Kg.		1524mm	177 Kg.	177 Kg.		1524mm	204 Kg.	186 Kg.
	1829mm	64 Kg.	64 Kg.		1829mm	102 Kg.	102 Kg.		1829mm	143 Kg.	143 Kg.		1829mm	181 Kg.	136 Kg.